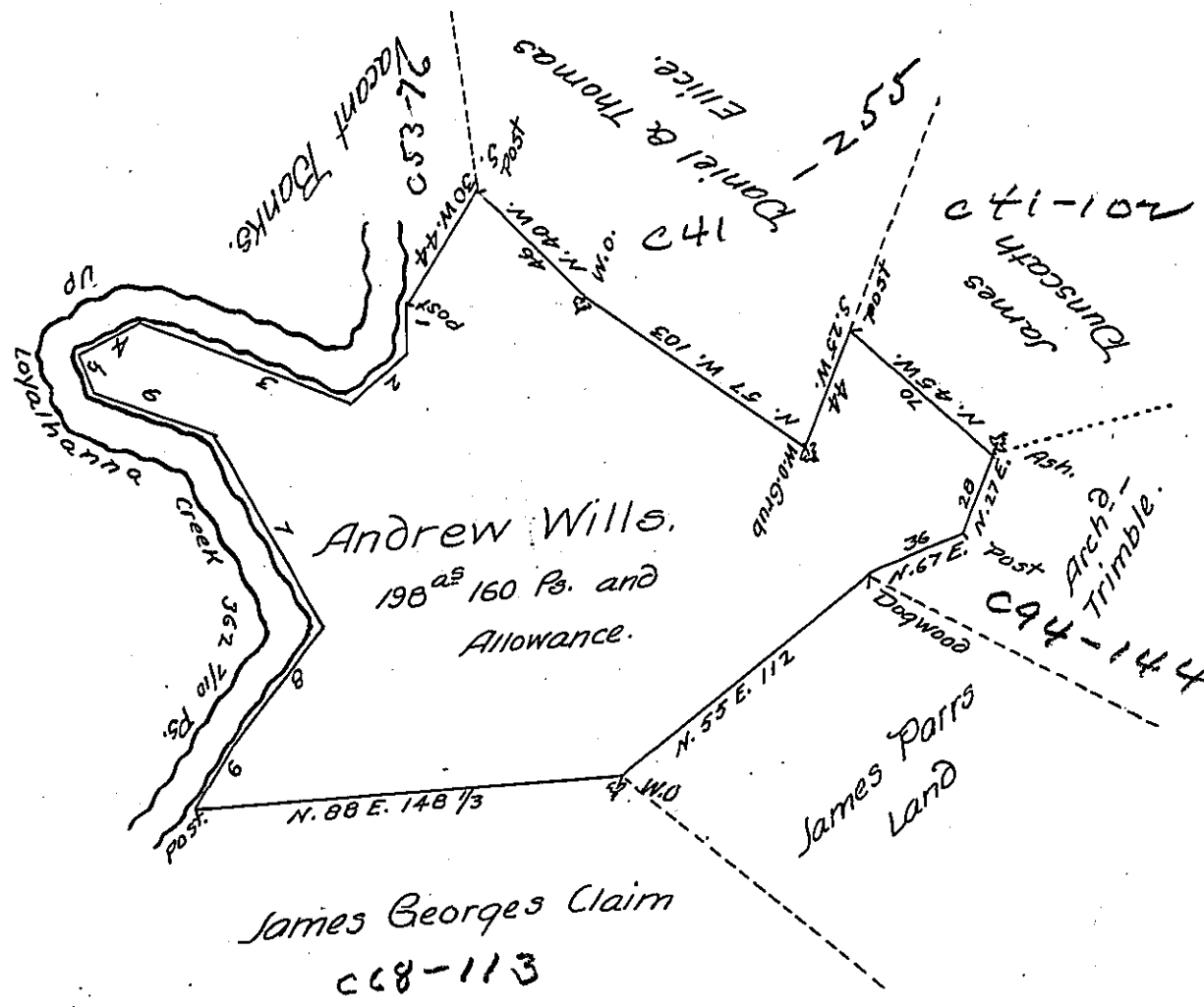


No. of Courses.	Courses up Loyalhanna Creek.	Distance.
1	SOUTH	17 7/10
2	S. 55 W.	25
3	N. 67 W.	80
4	S. 65 W.	27
5	S. 30 E.	12
6	S. 65 E.	45
7	S. 29 E.	80
8	S. 41 W.	55
9	S. 30 W.	21
total dist		362 7/10



In pursuance of a warrant dated August 27th. 1791 there was surveyed for Adam Wills the above described tract of land containing one Hundred and Ninety eight acres and 160 P. with an allowance proportioned to Six P. Cent situate in Derry Township in the County of Westmoreland surveyed October 31st. 1791.

J. John Moore, D.S.

Daniel Brodhead, Esq.
Surr. Genl. of Penna.

IN TESTIMONY that the above is a copy of the original remaining on file in the Department of Internal Affairs of Pennsylvania, made conformably to an Act of Assembly approved the 16th day of February, 1833, I have hereunto set my Hand and caused the Seal of said Department to be affixed at Harrisburg, this eighteenth day of June 1907.

Henry Howell
Secretary of Internal Affairs.